

**Standard version**

92...1 – PL1 – V - ...

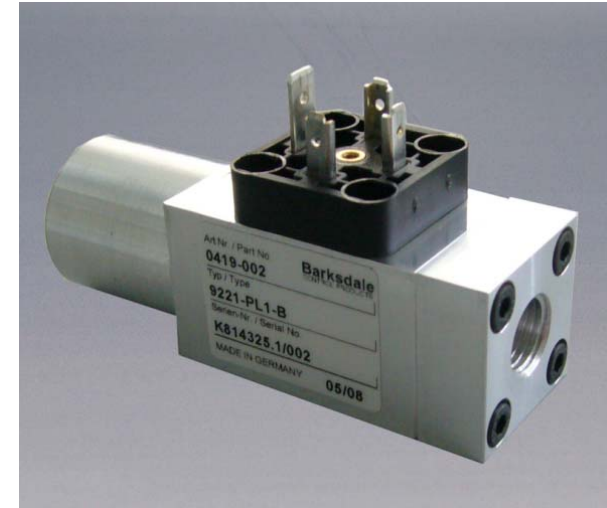
Compact pressure switch with G1/4" female thread and steel piston for high pressure, adjustable switch contact, housing aluminium, optionally with ATEX Ex ia approval or GL (ship yard) → in pending

**Order code for standard units** (more versions upon request)

9	2	2	1	-	P	L	1	-	V	-	G	L
<b>Option</b>												
G L = Germanischer Lloyd (Shipyards)												
B V = Bureau Veritas												
<b>Sealing material</b>												
V = PTFE / FKM (Polytetrafluoroethylene / Fluorine-Rubber)												
B = NBR (Buna)												
E = EPDM												
<b>Electrical connection</b>												
P L 1 = Cube plug DIN EN 175301-803 A (former DIN 43650)												
<b>Microswitch contact</b>												
1 = Microswitch with silver contact												
<b>Pressure stages</b>												
1 = 10 ... 50 bar												
2 = 20 ... 200 bar												
3 = 40 ... 400 bar												
<b>Process connection</b>												
2 = G1/4" female (DIN ISO 228-1)												

Fig. 11: Order code

**Operating Instructions**  
**Compact Pressure Piston Switches Type Series 9000**



1	Intended Applications .....	2
2	Safety Instructions.....	2
3	Standards .....	3
4	Warranty/Guaranty.....	3
5	Transport/Storage.....	3
6	Installation/Commissioning .....	4
7	Maintenance/Cleaning .....	7
8	Technical Data.....	8

**Barksdale GmbH**

Dorn-Assenheimer Straße 27  
D-61203 Reichelsheim

Phone: +49 (6035) 949-0  
Fax: +49 (6035) 949-111 and 949-113  
email: info@barksdale.de  
Internet: www.barksdale.de

Art. No.: 923-1650  
Index E, 13.07.2015



Specifications are subject to changes without notice!

## 1 Intended Applications

The pressure switches are specifically applied for monitoring and controlling of operations using maximum and minimum pressures. A micro switch triggers an electrical signal when minimum or maximum pressure are reached.

### DANGER

The switch may only be used in the specified fields of application (see type plate).

The temperature has to be within the specified ranges, the pressure values and the electrical rating must not exceed the values specified.

Observe also the applicable national safety instructions for assembly, commissioning and operation of the switch.

The switch is not designed to be used as the only safety relevant element in pressurized systems according to DGR 97/23/EC.

## 2 Safety Instructions

The safety instructions are intended to protect the user from dangerous situations and/or material damage.

In the operating instructions the seriousness of the potential risk is designated by the following signal words:

### DANGER

Refers to imminent danger to men.  
Nonobservance may result in fatal injuries.

### WARNING

Refers to a recognizable danger.  
Nonobservance may result in fatal injuries, and destroy the equipment or plant parts.

### CAUTION

Refers to a danger.  
Nonobservance may result in light injuries and material damage to the equipment and/or to the plant.

### IMPORTANT

Refers to important information essential to the user.

### Disposal

The equipment must be disposed of correctly in accordance with the local regulations for electric/electronic equipment.  
The equipment must not be disposed of with the household garbage!

## 3 Standards

The standards applied during development, manufacture and configuration are listed in the CE conformity and manufacturer's declaration.

## 4 Warranty/Guaranty

### Warranty

Our scope of delivery and services is governed by the legal warranties and warranty periods.

### Terms of guaranty

We guaranty for function and material of the single- / dual- pressure switch under normal operating and maintenance conditions in accordance with the statutory provisions.

### Loss of guaranty

The agreed guaranty period will expire in case of:

- changes or modifications to the switch/housing/fitting
- incorrect use,
- incorrect installation or
- incorrect handling or operation contrary to the provisions of these operating instructions.

No liability is assumed for any damage resulting therefrom, or any consequential damage.

## 5 Transport/Storage

### CAUTION

Severe shock and vibrations should be avoided during transport. Storage should be dry and clean.

## 6 Installation/Commissioning

<b>DANGER</b>
<p>Only install or uninstall the switch when deenergized (electrically and hydraulically/pneumatically). Pressure connection and electrical connection must be carried out by trained or instructed personnel according to state-of-the-art standards. The switch must only be installed in systems where the maximum operation pressure <math>P_{max}</math> is not exceeded (see the name plate).</p>

<b>WARNING</b>
<p>Pressure peaks and pressure shocks exceeding the maximum operating pressure are inadmissible. The maximum operating pressure is the upper final value of the adjustable range or, if specified, the pressure indicated as maximum operating pressure (see Fig. 9 or the nameplate). Exceeding the max. operating pressure affects the performance and the life span of the product and may damage it. Pressure switches must be mounted vibrationless.</p>

<b>WARNING</b>
<p>Check the switch regularly for functioning. If the switch does not work properly, stop operation immediately!</p>

<b>IMPORTANT</b>
<p>The standard G1/4" female thread can be mounted directly on the pipe connection. The mounting with a screw-wrench (SW30 (width across flats 1.18"))( only on the thread block (see Fig. 8). Torque: max. 30 Nm (22 ft lb(f))</p>

<b>IMPORTANT</b>
<p>All pressure switches are tested for proper functioning before they leave the factory. The factory proof pressures are stated on the type plate.</p>

### Contact Protection

The micro switches used are normally suitable for both direct and alternating current operation. Inductive, capacitive and lamp loads may, however, considerably reduce the life expectancy of a micro switch and, under extreme circumstances, even damage the contacts.

Depending on the application spark suppression and current limiting is recommended (see figures 1 to 4).

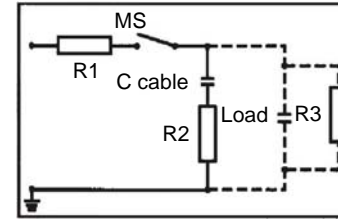


Fig. 1: Protection in case of capacitive loads  
R1: Protection against starting current  
rushes R2,R3: Protection against high discharge currents

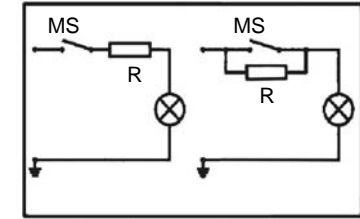


Fig. 2: Lamp load provided with resistance in parallel or series connection to switch of condensators

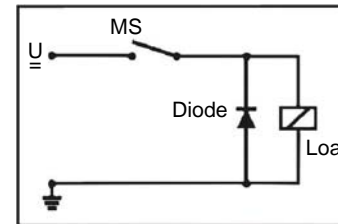


Fig. 3: Protection in case of continuous current and inductive load by recovery diode

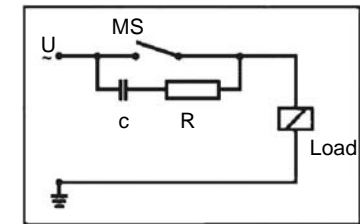


Fig. 4: Protection in case of alternating current and inductive load by RC-link

### Set point adjustment

<b>IMPORTANT</b>
<p>Factory-Provided: pressure (temperature) switch point setting We confirm for pressure (temperature) switches that have been factory set the setting will be detailed on the label name plate. Warranty is not applicable for any changes that may occur due to transportation or installation. For critical applications we recommend the setting is checked and re-set if necessary after installation and wiring of the pressure (temperature) switch.</p>


In pressure switches, a displacement of the pressure sensing element (piston) occurs with a change in pressure. Following the displacement of the pressure sensing element operates a microswitch.

Upon delivery of the product, the set points are likely to be found in the middle of the adjustable range. On request, fix set points may be adjusted by our factory. In this event, the point will be indicated on the type plate or any separate plate, i = increasing, d = decreasing.

The set point is adjusted by turning the captive adjustment screw (see Fig. 8).

Allow pressure switch to reach the desired switch pressure.

Turn adjustment screw clockwise or counterclockwise to actuate the micro switch.

	<b>IMPORTANT</b>
Please consult the wiring diagram for the contact status at atmospheric pressure (see).	

**Precise adjustment of set point to actuate on increasing pressure**

- 1. Lower system pressure to 0 bar.
- 2. Increase pressure slowly and check if micro switch is actuated at desired switch pressure.
- 3. If necessary, readjust by turning the adjustment screw
- Repeat preceding steps (1. to 3.) until microswitch operates at desired switch pressure.

**Precise adjustment of set point to actuate on decreasing pressure**

- 4. Increase pressure up to a point clearly above the desired switch pressure (at least, switch pressure plus max. hysteresis; not above max. operating pressure).
- 5. Lower pressure slowly and check if micro switch is actuated at desired switch pressure.
- 6. If necessary, readjust by turning the adjustment screw
- Repeat preceding steps (4. to 6.) until microswitch operates at desired switch pressure.

**Electrical connections**, dimensions in mm (inch)

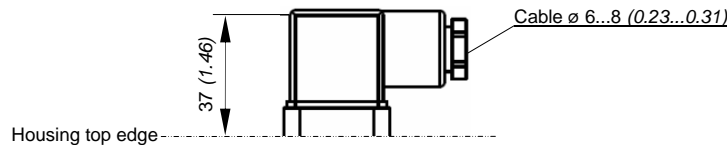


Fig. 5: Standard: PL1 (others – only on request)

**Wiring code (contact status at atmospheric pressure)**

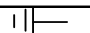
	PL1
C	1
NC	2
NO	3
PE	

Fig. 6: Wiring Code

**Use in Hazardous Locations (in preparation)**

The pressure switches type Series 9000 with optional **Ex i** are approved for applications in hazardous locations for intrinsically safe circuits. Units designed for intrinsically safe **Ex i** application must be operated with a switch amplifier (see Fig. 7).


They are only for use in an approved intrinsically safe circuit.

Units with explosion-proof enclosures must be operated in accordance with their approval.

Approval class and identification characteristics according to type plate information must always be observed. EC-design approved types are marked with a label according to ATEX 94/9/EC.

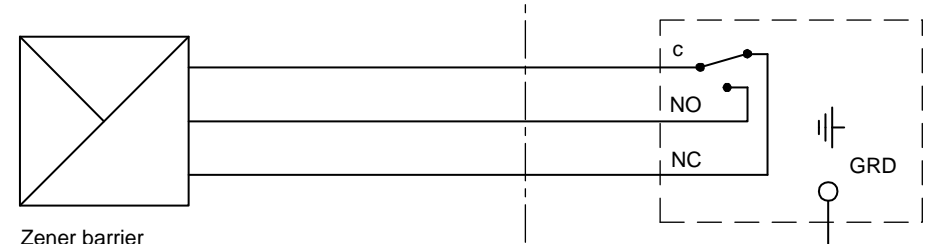
The wiring between switch and **Ex i** isolation amplifier must meet the local safety requirements.

The customer must provide for a highly conductive connection between switch and grounding.

	<b>WARNING</b>
With option Ex i: The models having light-alloy (aluminium) enclosures or enclosure parts must be protected against all impact or friction which can ignite the explosive atmosphere.	

**Unprotected area**

**Ex ia area**



Zener barrier  
Switch amplifier NAMUR

Fig. 7: Operation of pressure switches in intrinsically safe areas

**7 Maintenance/Cleaning**

**Maintenance**

The pressure switch is maintenance free. Checking the set points lies within the discretion of the user. The usual preventive maintenance work in accordance with the PED and ATEX guidelines must always be carried out.

Please note that small setpoint drifts may occur during the initial use of the switch (run-in period). To minimize the setpoint drift we can perform a run-in (ageing) process in our works on request. Larger or continuing setpoint drifts during the normal use of the switch may indicate that the measuring system is not used correctly within the specified limits, exceeding the design criteria or is worn-out. This might lead to metal fatigue of the measuring system and it therefore should be replaced before an ultimate rupture of the metal might take place. Please consult your supplier or Barksdale directly for guidelines.

## 8 Technical Data

See data sheet

Dimensions in mm (inch)

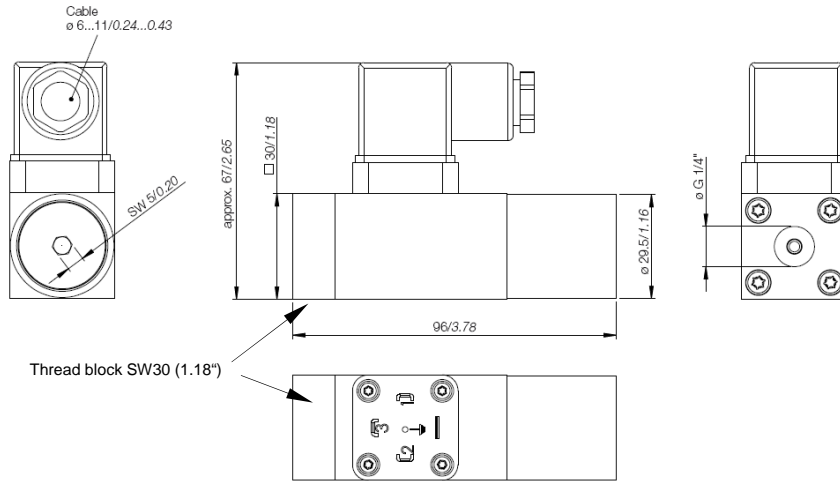


Fig. 8: Compact pressure switch type Series 9000, standard model

	<b>IMPORTANT</b>
<p>The standard G1/4" female thread can be mounted directly on the pipe connection. The mounting with a screw-wrench (SW30 (width across flats 1.18") only on the thread block (see Fig. 8).</p> <p>The electrical plug PL1 are included in the delivery.</p> <p>Torque on the thread block: max. 30 Nm (22 ft lb(f))</p>	

### Adjustable ranges

Code	Pressure range bar	Adjustment ranges falling bar	Adjustment ranges rising bar	Hysteresis end of range max. %	Max. operat. pressure bar	Test pressure bar
1	6 ... 44	10 ... 50	10%	250	300	
2	15 ... 185	20 ... 200			300	
3	35 ... 360	40 ... 400			600	

Fig. 9: Pressure ranges

### Electrical Ratings Silver Contacts

Silver contacts	Inductive load	Resistance load
250 V AC	2,5 A	10,0 A
24 V DC	1,0 A	6,0 A
Minimum load values: 20 mA at 24 V DC		

Fig. 10: Electrical ratings

	<b>IMPORTANT</b>
<p>We recommend to use a prefuse of the maximum current rating from the table above according to the load switched.</p>	

### Operating life time

Normal expected service life (expressed in the number of cycles over the full adjustment range) is appr. 1 million for the pressure switch. This may be extended to 2.5 million cycles max. if only a part of the adjustment range is used (about 20%).

Switch sensor life may also be effected negatively by:

Media not compatible with the wetted materials.

Rapid pressure changes in the system, or in case of diaphragm switches >30 cycles/minute, in case of piston switches >60 cycles/minute.

System cycling pressure exceeding the top of the adjustable range.

The proof pressure must never be exceeded, otherwise the switch may be damaged. Careful selection of the pressure range can have a positive effect on the service life of the switch.